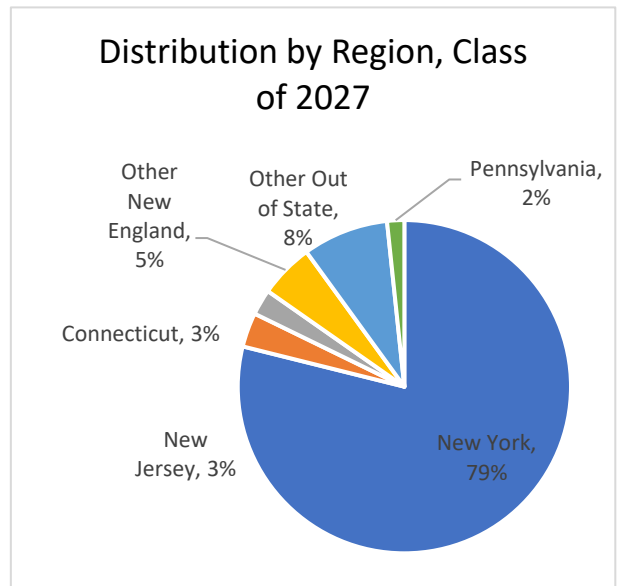


### Admission - First Time First Year Students

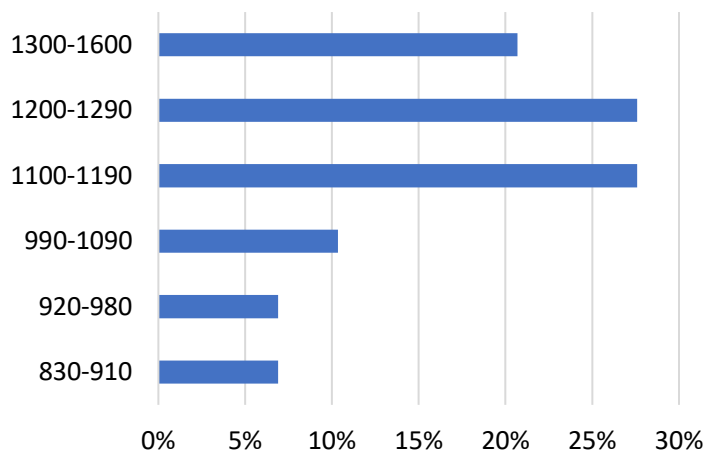
Applications:	3216
Admissions:	3001
Acceptance Rate:	93.3%
Enrolled:	360
Yield Rate:	12.0%

### Admission - Transfer Students

Applications:	192
Admissions:	170
Acceptance Rate:	88.5%
Enrolled:	38
Yield Rate:	22.4%



Percent of First Year Students in Each Combined SAT Score Range - Class of 2027



Average Combined SAT Score 1170

### First Time First Year Students - Demographics

	Number	Percent
ALANA:	110	30.6%
First Generation:	111	30.8%
Pell Eligible:	153	42.5%
Female:	214	59.4%
STEM Major:	116	32.2%
Athlete:	144	40.0%
Age 17-19:	346	96.1%
International:	9	2.5%

### Financial Aid

	Entering First Time First Year	Entering Transfer
Total institutional aid	\$11,212,043	\$784,516
Total Title IV aid	\$934,516	\$504,790
Average First Year financial aid package	\$35,061	\$28,137

2023-24 Tuition & Fees	\$51,762
2023-24 Room & Board	\$14,647
2023-24 Total Cost	\$66,409

## ENROLLMENT BY DIVISION, Fall 2023

Degree Seeking, 1st Major Only

	Headcount	FTE (1 FTE = 15 cr)
Total Enrollment	1,099	1,070
Arts & Humanities Division	139	142
Natural Sciences Division	412	394
Social Sciences Division	521	509
Undeclared	27	25

## FACULTY, Fall 2022

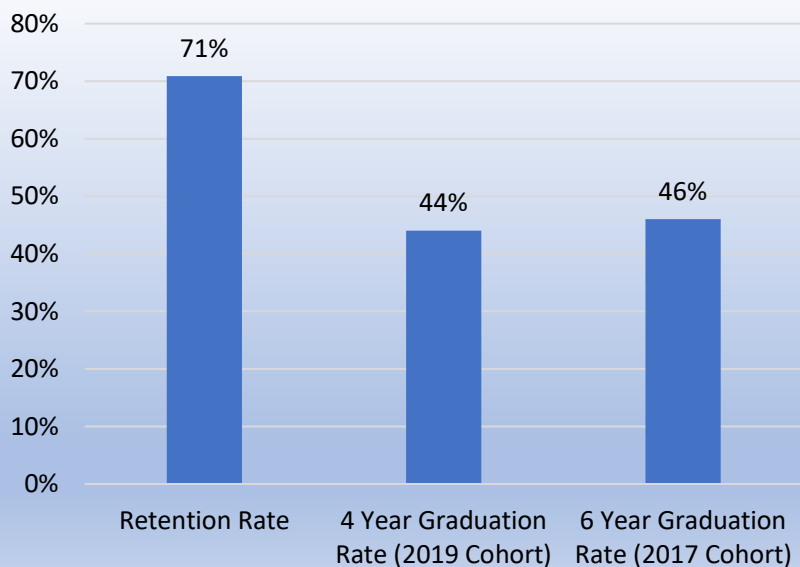
Number of FT instructional faculty:	99
Number of tenured faculty:	52
Number of tenure track faculty:	30
Percent Female:	48%
Percent ALANA:	10%
% of Sections taught by FT faculty:	70%

## FINANCE & BUDGET

FY Ending June 30, 2023

Endowment:	\$50,211,828
Operating Revenue:	\$54,680,706
Operating Expenses:	\$56,702,988
% Budget Supporting Instruction:	30%

## STUDENT SUCCESS MEASURES



## Enrollment by Major (1st Major only)

