



HARTWICK
COLLEGE
est. 1797

CAREER
DEVELOPMENT
& NETWORK
ENGAGEMENT

2024 CAREER IMPACT REPORT

ACHIEVING LIFE BALANCE: Success in your career, significance in your life.

WHAT WE DO

- 1 Coach students on building a career plan based on values, strengths and interests.
- 2 Develop career readiness in the classroom, at events and on the job.
- 3 Connect students with our network of community partners, alumni and employers.
- 4 Build confidence and employability for students with real-world work experiences.

CAREER EVERYWHERE

Campus-wide commitment and powerful partnerships ensure that career initiatives meet students where they are.

100%

of students receive career education in the classroom.

of student employees and interns develop professional skills on the job.

of students are assigned a career coach their junior & senior year.

of student-athletes exercise career readiness awareness in their sport.

of students have access to internships and real-world work experiences.

Hartwick offers a healthy balance of career education, experience and networking

CAREER IN THE 1ST YEAR

100% students engage in career exploration, planning in their first-year FlightPath courses.

COLLEGE TO CAREER PREP

Our FlightPath capstone requirement ensures ALL students build their network, refine résumés and interview skills, and have concrete next steps for their successful transition from college to career.

INDUSTRY DAYS

Education-focused employer and alumni networking programs.

THE NETWORK

A career-focused network of professionals committed to creating connections and opportunities for our students and graduates.

THE SUCCESS SUMMIT

A pre-professional conference to prepare students for networking, internships and jobs.

CERTIFICATIONS

Dozens of industry certification and micro-credentials embedded in degree programs.

CAREER EXPLORATION TRIPS

Destination travel opportunities with industry site visits and alumni networking regionally and in Silicon Valley, NYC, Boston and DC.

PARTNERSHIPS

Strong regional workforce partnerships in healthcare, sport management, human services, finance and accounting.

WHERE ARE THEY NOW?

CLASS OF 2024

(First Destination Survey data)

90%

are working or in graduate school within 6 months of graduation

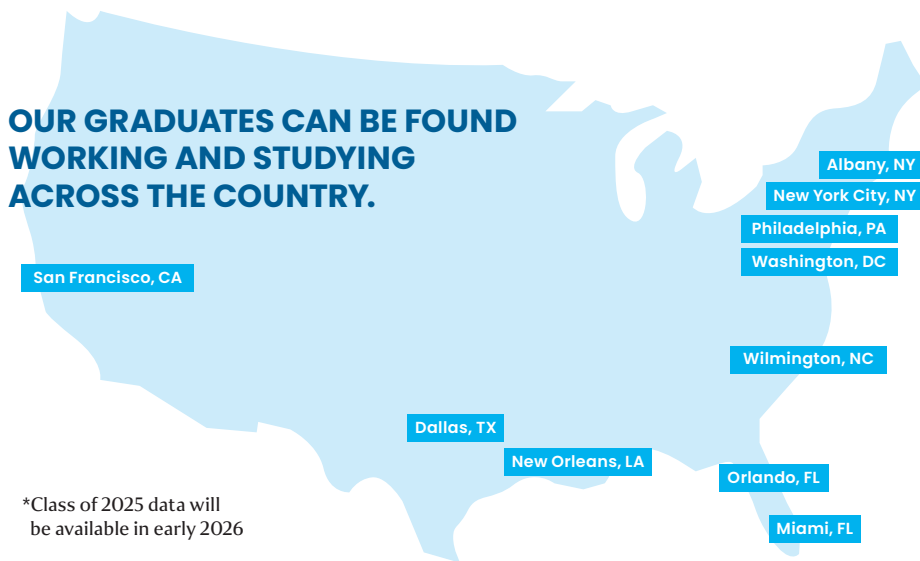
100%

of graduates report their education prepared them for fulfilling careers.

9 IN 10

9 in 10 graduates said Hartwick was instrumental in reaching career goals.

OUR GRADUATES CAN BE FOUND WORKING AND STUDYING ACROSS THE COUNTRY.



*Class of 2025 data will be available in early 2026

TOP INDUSTRIES

- Health & Health Services
- Education
- Human Services
- Business and Public Administration

TOP EMPLOYERS

- Albany Medical Center
- Fidelity Investments
- Regeneron
- New York Department of Health
- Amazon
- Citi
- Bassett Healthcare Network

TOP GRADUATE SCHOOLS

- New York University
- Dartmouth College
- Johns Hopkins University
- Pace University



Impact

Payscale

\$120K

Mid-Career Salary

Top 50 Best Colleges in New York for Mid-Career Pay

\$65K

Early Career Salary

Top 75 Best Colleges in New York for Early Career Pay

TOP 40

Best Colleges in New York for High Meaning

18,000+

alumni world-wide

HARTWICK COLLEGE

CAREER DEVELOPMENT & NETWORK ENGAGEMENT

Golisano Hall

Oneonta, New York 13820

careerdevelopment@hartwick.edu