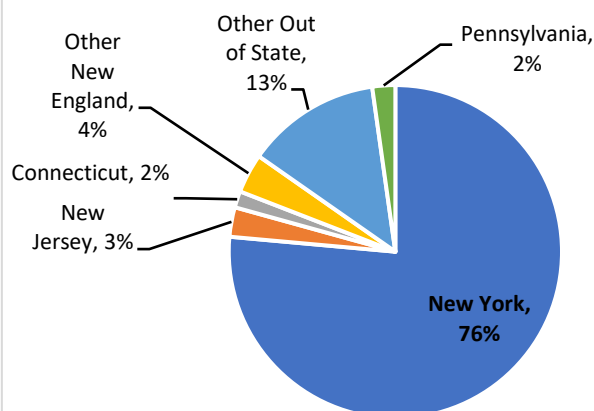
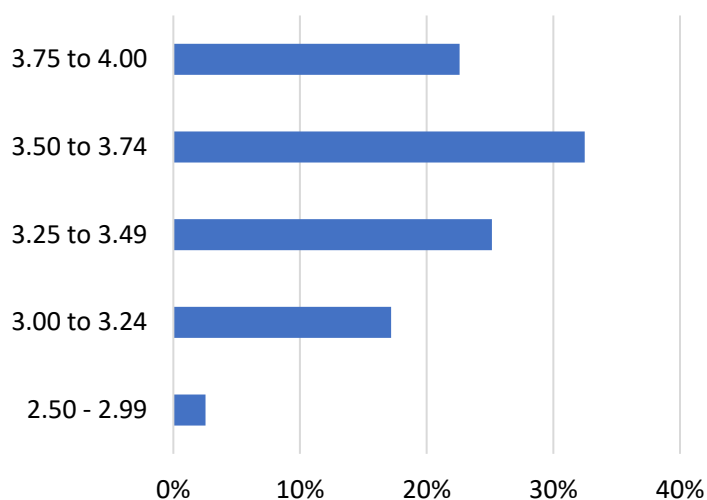


Admission - First Time First Year Students

Applications	4863
Admissions	3379
Acceptance Rate	69.5%
Enrolled	314
Yield Rate	9.3%

Admission - Transfer Students

Applications	258
Admissions	159
Acceptance Rate	61.6%
Enrolled	33
Yield Rate	20.8%

Distribution by Region, Class of 2027**Percent of First Year Students in Each HS GPA Range - Class of 2028****First Time First Year Students - Demographics**

	Number	Percent
ALANA	71	22.6%
First Generation	74	23.6%
Pell Eligible	123	39.2%
Female	187	59.6%
STEM Major	98	31.2%
Athlete	143	45.5%
Age 17-19	300	95.5%
International	23	7.3%

Financial Aid

	Entering First Time First Year	Entering Transfer
Total institutional aid	\$10,223,137	\$869,047
Total Title IV aid	\$2,359,417	\$316,350
Average First Year financial aid package	\$51,170	\$43,695

2023-24 Tuition & Fees \$53,832

2023-24 Room & Board \$15,232

2023-24 Total Cost \$69,064

ENROLLMENT BY DIVISION, Fall 2024

Degree Seeking, 1st Major Only

	Headcount	FTE (1 FTE = 15 cr)
Total Enrollment	1,086	1,061
Arts & Humanities Division	156	160
Natural Sciences Division	408	389
Social Sciences Division	498	489
Undeclared	24	23

FACULTY, Fall 2024

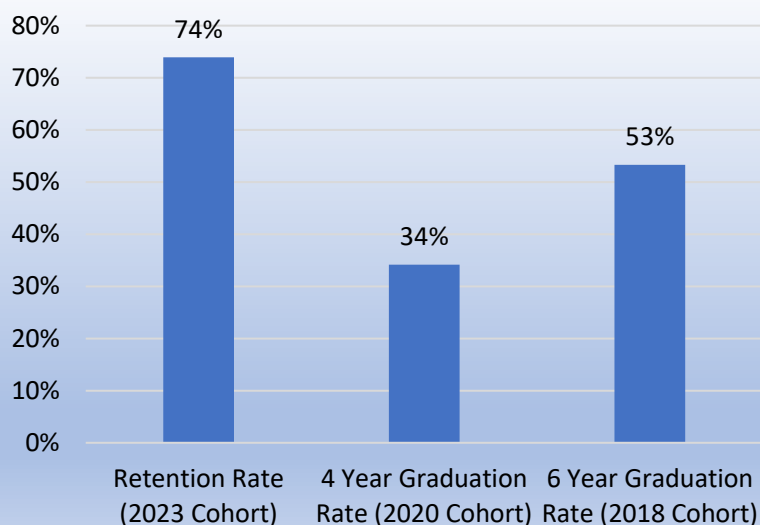
Number of FT instructional faculty	86
Number of tenured faculty	49
Number of tenure track faculty	17
Percent Female	49%
Percent ALANA	12%
% of Sections taught by FT faculty	77%

FINANCE & BUDGET

FY Ending June 30, 2024

Endowment	\$50,211,828
Operating Revenue	\$54,680,706
Operating Expenses	\$56,702,988
% Budget Supporting Instruction	29%

STUDENT SUCCESS MEASURES



Enrollment by Major (1st Major only)

