

### Admission - First Time First Year Students

|                 |       |
|-----------------|-------|
| Applications    | 3613  |
| Admissions      | 3056  |
| Acceptance Rate | 84.6% |
| Enrolled        | 284   |
| Yield Rate      | 9.3%  |

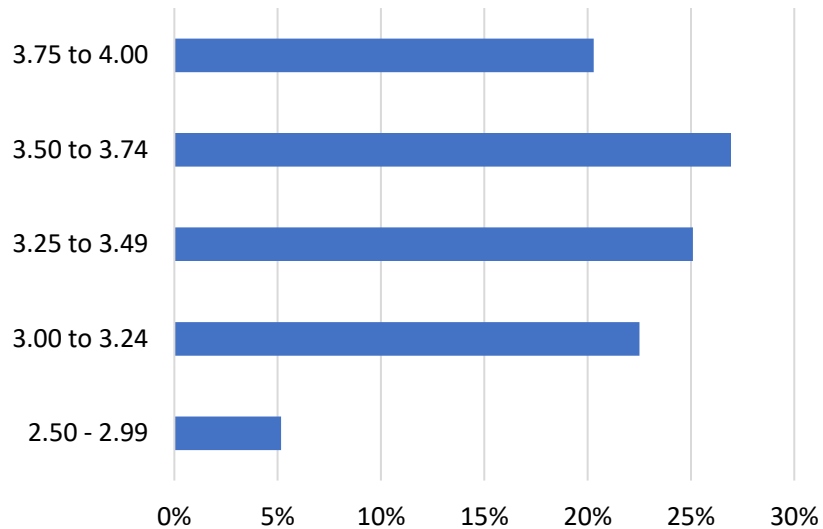
### Admission - Transfer Students

|                 |       |
|-----------------|-------|
| Applications    | 219   |
| Admissions      | 144   |
| Acceptance Rate | 65.8% |
| Enrolled        | 35    |
| Yield Rate      | 24.3% |

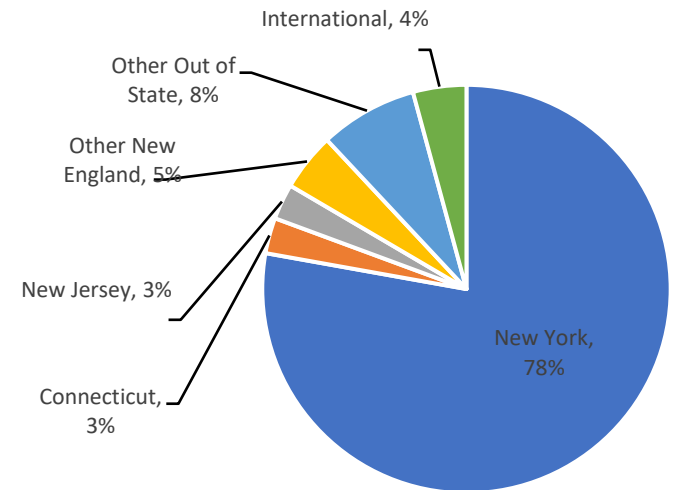
### First Time First Year Students - Demographics

|                  | Number | Percent |
|------------------|--------|---------|
| ALANA            | 91     | 32.0%   |
| First Generation | 100    | 35.2%   |
| Pell Eligible    | 123    | 43.3%   |
| Female           | 144    | 50.7%   |
| STEM Major       | 79     | 27.8%   |
| Athlete          | 107    | 37.7%   |
| Age 17-19        | 271    | 95.4%   |
| International    | 12     | 4.2%    |

Percent of First Year Students in Each HS GPA Range - Class of 2028



Distribution by Region, Fall 2025 First Year Students



## Financial Aid

|   | Entering First<br>Year | Entering Transfer |                        |          |
|---|------------------------|-------------------|------------------------|----------|
| Total institutional aid                     | \$2,825,751            | \$351,823         | 2025-26 Tuition & Fees | \$22,000 |
| Total Title IV aid                          | \$2,953,226            | \$317,328         | 2025-26 Room & Board   | \$16,000 |
| Average First Year financial<br>aid package | \$6,874,106            | \$844,262         | 2025-26 Total Cost     | \$38,000 |

### ENROLLMENT BY DIVISION, Fall 2025

Degree Seeking, 1st Major Only

|                            | Headcount | FTE<br>(1 FTE = 15 cr) |
|----------------------------|-----------|------------------------|
| Total Enrollment           | 1,032     | 1,033                  |
| Arts & Humanities Division | 137       | 144                    |
| Natural Sciences Division  | 414       | 406                    |
| Social Sciences Division   | 468       | 471                    |
| Undeclared                 | 13        | 13                     |

### FACULTY, Fall 2025

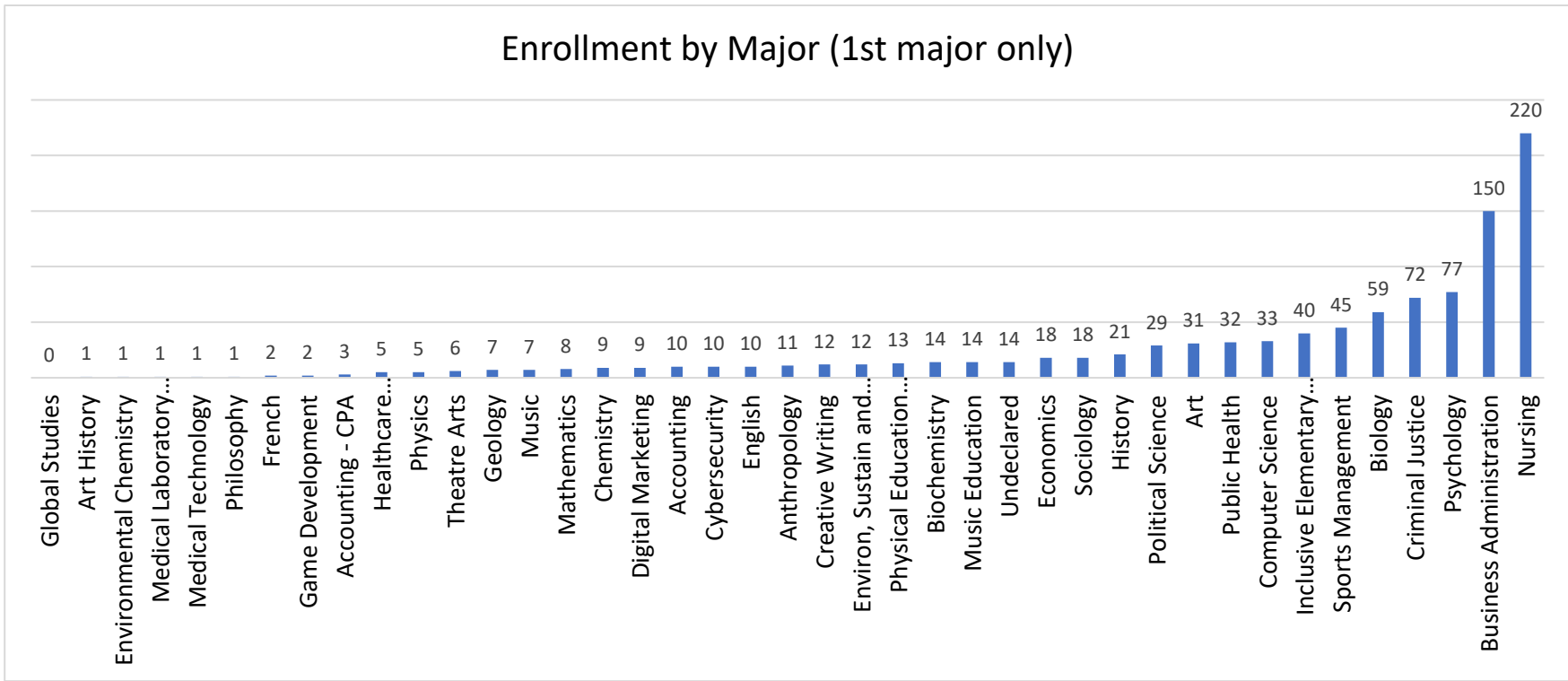
|                                    |     |
|------------------------------------|-----|
| Number of FT instructional faculty | 86  |
| Number of tenured faculty          | 52  |
| Number of tenure track faculty     | 18  |
| Percent Female                     | 48% |
| Percent ALANA                      | 17% |
| % of Sections taught by FT faculty | 77% |

### FINANCE & BUDGET

FY Ending June 30, 2025

|                                    |              |
|------------------------------------|--------------|
| Endowment                          | \$39,832,184 |
| Operating Revenue                  | \$48,706,568 |
| Operating Expenses                 | \$55,271,275 |
| % Budget Supporting<br>Instruction | 28%          |

### Enrollment by Major (1st major only)



### STUDENT SUCCESS MEASURES

